

# **KRYPTON**

Your Components



## Spare Parts Rehab



DEVELOPMENT  
PRODUCTION  
SALE



KRYPTON Industries Limited

---

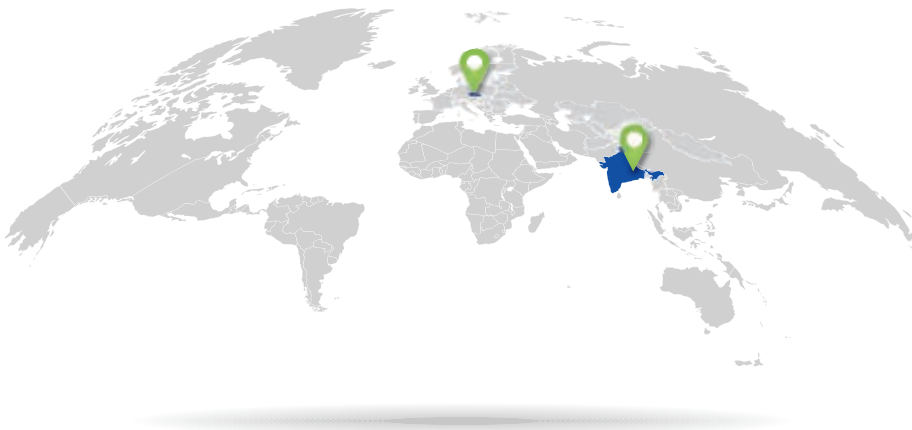
# Services you can rely on.



**Europe Office**

KRYPTON Europe s.r.o.  
Nádražní 48, 514 01 Jilemnice  
CZECH REPUBLIC

Krypton Industries Limited  
410, Vardaan Building  
25A Camac Street, Kolkata – 700 016  
West Bengal , INDIA



KRYPTON

Complete **wheels,**  
castor wheels, polyurethane  
**tyres,** pneumatic tyres,  
foam filled tyres for electric  
wheelchairs, aluminium castor  
wheels, forks, rollators and  
electric wheelchairs  
accessories,  
armpads, seat cushions,  
crutches and other.

**KRYPTON Industries Limited**

410, Vardaan Building, 25A  
Camac Street,  
Kolkata - 700016, India





# Content

## Page

### 4-7 Aluminium Wheels

- 4" Aluminium Wheel with Polyurethane Tyre
- 5" Aluminium Wheel with Polyurethane Tyre

### 8-17 Wheels with Polyurethane Tyre

- 5" Wheels with Polyurethane Tyre
- 6" Wheels with Polyurethane Tyre
- 7" Wheels with Polyurethane Tyre
- 8" Wheels with Polyurethane Tyre
- 8" Wheel with TPR Tyre
- 10" Baby Strollers Wheel
- 12" Wheels with Polyurethane Tyre

### 18-19 Wheels with Rubber Tyre

- 5" Wheels with Solid Rubber Tyre

### 20-23 Rear Wheels Aluminium & Plastic

- 24" Aluminium Spoke Wheels
- 24" Plastic Spoke Wheels

### 24-36 Polyurethane Tyres

- WC
- KLB
- KL
- KB
- ECO-LN
- ECO-RX
- KDB
- PYD

### 37-48 Polyurethane Parts

- Arm Pads and Foam Parts
- Seat Cushion

### 49 Others

- Ice Peak



## Profile Treads



SMOOTH

## Profile Rim



AL

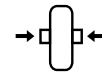
## Legend



Wheel diameter  
[mm]



Wheel width  
[mm]



Hub length  
[mm]



Axle diameter  
[mm]



Profile Treads



Colours



Weight [g]



Load capacity [kg]

icare international private limited

---

# Aluminium Wheels

---



**KRYPTON**

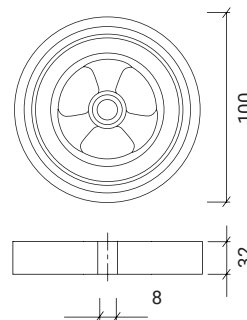
4"

# Aluminium Wheels

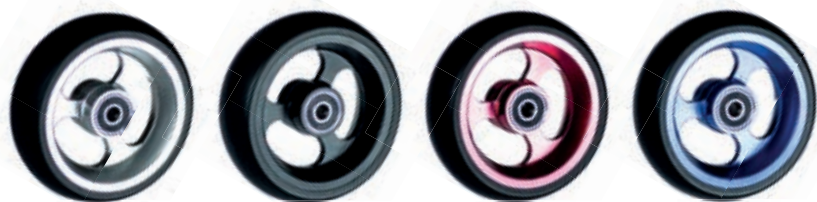


## 4" Aluminium Wheel with Polyurethane Tyre

DESCRIPTION:  
Light aluminium wheel for wheelchairs.



Article code		[mm]									kg	Price/€
PUW200027	AL	100 × 32	100	32	26	8	Smooth	Silver	180 g	30 kg		
PUW200028	AL	100 × 32	100	32	26	8	Smooth	Black	180 g	30 kg		
PUW200029	AL	100 × 32	100	32	26	8	Smooth	Red	180 g	30 kg		
PUW200030	AL	100 × 32	100	32	26	8	Smooth	Blue	180 g	30 kg		



**KRYPTON Industries Limited**  
410, Vardaan Building, 25A, Camac Street, Kolkata 700016  
India



**////KRYPTON**

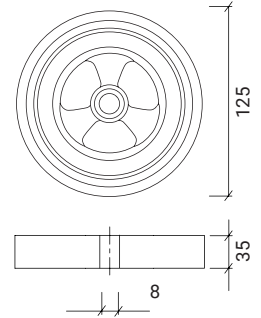
5"

# Aluminium Wheels

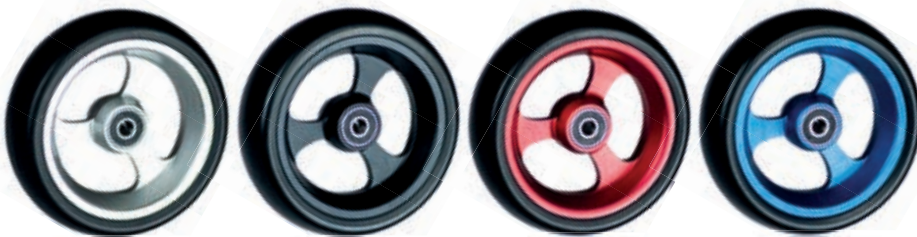


## 5" Aluminium Wheel with Polyurethane Tyre

DESCRIPTION:  
Light aluminium wheel for wheelchairs.



Article code		[mm]								kg	Price/€
PUW200023	AL	125 × 35	125	35	26	8	Smooth	Silver	245 g	35 kg	
PUW200024	AL	125 × 35	125	35	26	8	Smooth	Black	245 g	35 kg	
PUW200025	AL	125 × 35	125	35	26	8	Smooth	Red	245 g	35 kg	
PUW200026	AL	125 × 35	125	35	26	8	Smooth	Blue	245 g	35 kg	



Krypton Industries Limited  
24A, Camac street, Kolkata 700016,  
India



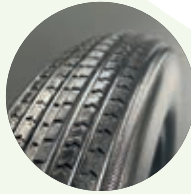
### Profile Treads



SMOOTH



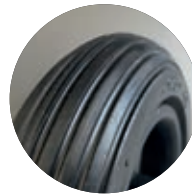
RACER



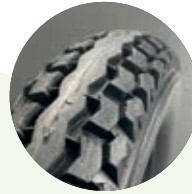
SWIFT



RC



RL



M28

### Profile Rim



HOLLOW



STANDARD

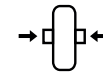
### Legend



Wheel diameter  
[mm]



Wheel width  
[mm]



Hub length  
[mm]



Axle diameter  
[mm]



Profile Treads



Colours



Weight [g]



kg  
Load capacity [kg]

# Wheels with Polyurethane Tyre

---



**////KRYPTON**

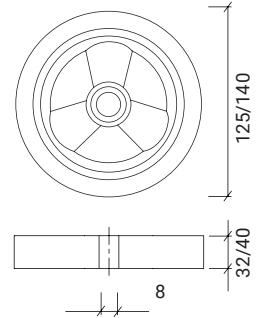
5"

# Wheels with Polyurethane Tyre



## 5" Wheels with Polyurethane Tyre

DESCRIPTION:  
Light plastic wheel for wheelchairs.



Article code	[mm]								kg	Price/€
PUW01609-38	125 × 32	125	32	38	8	RC	Grey	200 g	30 kg	
PUW01609B-38	125 × 32	125	32	38	8	RC	Black	200 g	30 kg	
PUW01609-45	125 × 32	125	32	45	8	RC	Grey	200 g	30 kg	
PUW01609B-45	125 × 32	125	32	45	8	RC	Black	200 g	30 kg	

Article code	[mm]								Load	Price/€
PUW30008-45	125 × 40	125	40	45	8	Smooth	Grey	270 g	35 kg	
PUW30009-45	140 × 40	140	40	45	8	Smooth	Grey	350 g	40 kg	



125 × 32 mm



125 × 32 mm



125 × 40 mm



140 × 40 mm

Krypton Industries Limited  
24A, Camac street, Kolkata 700016,  
India

6"

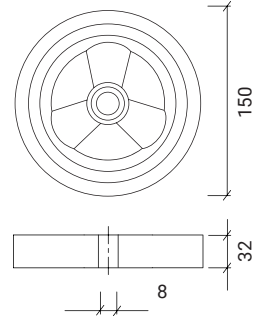
**KRYPTON**

# Wheels with Polyurethane Tyre



## 6" Wheels with Polyurethane Tyre

DESCRIPTION:  
Light plastic wheel for wheelchairs.



Article code	[mm]								kg	Price/€
PUW01605-36	150 × 32	150	32	36	8	RL	Grey	290 g	30 kg	
PUW01605B-36	150 × 32	150	32	36	8	RL	Black	290 g	30 kg	
PUW01605-38	150 × 32	150	32	38	8	RL	Grey	290 g	30 kg	
PUW01605B-38	150 × 32	150	32	38	8	RL	Black	290 g	30 kg	
PUW01605-45	150 × 32	150	32	45	8	RL	Grey	290 g	30 kg	
PUW01605B-45	150 × 32	150	32	45	8	RL	Black	290 g	30 kg	



150 × 32 mm  
45 mm



150 × 32 mm  
38 mm

Krypton Industries Limited  
24A, Camac street, Kolkata 700016,  
India

**////KRYPTON**

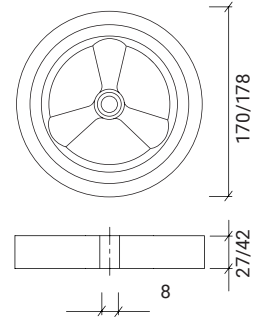
7"

# Wheels with Polyurethane Tyre



## 7" Wheels with Polyurethane Tyre

DESCRIPTION:  
Light plastic wheel for wheelchairs.



Article code	[mm]								kg	Price/€
<b>PUW02210-60</b>	175 × 25	178	27	60	8	RC	Grey	330 g	30 kg	
<b>PUW02210B-60</b>	175 × 25	178	27	60	8	RC	Black	330 g	30 kg	

Article code	[mm]								Load	Price/€
<b>PUW01702-45</b>	175 × 40	170	42	45	8	RL	Grey	430 g	45 kg	
<b>PUW01702B-45</b>	175 × 40	170	42	45	8	RL	Black	430 g	45 kg	
<b>PUW01702-60</b>	175 × 40	170	42	60	8	RL	Grey	430 g	45 kg	
<b>PUW01702B-60</b>	175 × 40	170	42	60	8	RL	Black	430 g	45 kg	



175 × 25 mm



175 × 25 mm



175 × 40 mm



175 × 40 mm

Krypton Industries Limited  
24A, Camac street, Kolkata 700016,  
India

8"

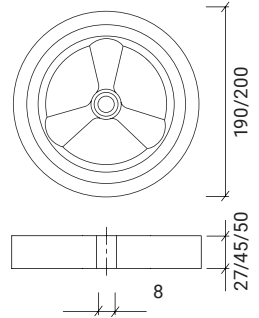
**KRYPTON**

# Wheels with Polyurethane Tyre



## 8" Wheels with Polyurethane Tyre

DESCRIPTION:  
Light plastic wheel for wheelchairs.



Article code	[mm]								kg	Price/€
PUW02105-45	200 × 30	200	27	45	8	RC	Grey	410 g	35 kg	
PUW02105B-45	200 × 30	200	27	45	8	RC	Black	410 g	35 kg	
PUW02105-60	200 × 30	200	27	60	8	RC	Grey	410 g	35 kg	
PUW02105B-60	200 × 30	200	27	60	8	RC	Black	410 g	35 kg	

Article code	[mm]								Load	Price/€
PUW01502-60-ECO	200 × 50	190	45	60	8	RL	Grey	480 g	50 kg	
PUW01502B-60-ECO	200 × 50	190	45	60	8	RL	Black	480 g	50 kg	
PUW01502-60-REAL	200 × 50	200	50	60	8	RL	Grey	560 g	50 kg	
PUW01502B-60-REAL	200 × 50	200	50	60	8	RL	Black	560 g	50 kg	



200 × 30 mm



200 × 30 mm



200 × 50 mm  
REAL



200 × 50 mm  
ECO

Krypton Industries Limited  
24A, Camac street, Kolkata 700016,  
India

**KRYPTON**

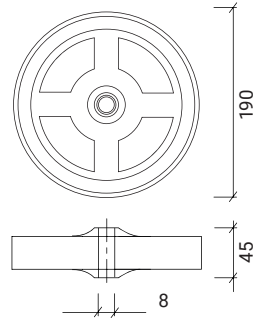
# 8" Roll

# Rollator Wheel TPR Tyre



## 8" Wheel with TPR Tyre

DESCRIPTION:  
Light plastic wheel for rollators.



Article code

[mm]



kg  
↓ ↓

Price/€

TPRW0001

190 × 45

190

45

60

8

RC

Dark grey

390 g

30 kg



Krypton Industries Limited  
24A, Camac street, Kolkata 700016,  
India



**////KRYPTON**

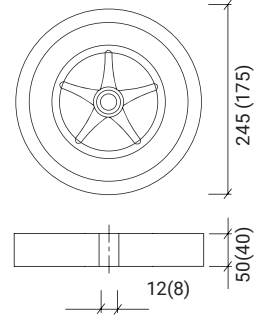
10"(7")

# Baby Strollers Wheel



## 10"(7") Baby Strollers Wheel

DESCRIPTION:  
Plastic wheel for baby strollers  
with polyurethane tyre.



Article code	[mm]								kg ↓↓	Price/€
PUW01312-46	245 × 50	245	50	46,5	12	RACER	Grey	810 g	50 kg	
PUW001312B-46	245 × 50	245	50	46,5	12	RACER	Black	810 g	50 kg	

Article code	[mm]								kg ↓↓	Price/€
PUW30012-60	175 × 40	175	40	60	8	RACER	Grey	475 g	45 kg	
PUW30012B-60	175 × 40	175	40	60	8	RACER	Black	475 g	45 kg	



245 × 50 mm

245 × 50 mm

Krypton Industries Limited  
24A, Camac street, Kolkata 700016,  
India

**////KRYPTON**

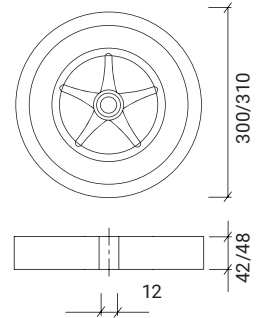
12"

# Wheels with Polyurethane Tyre



## 12" Wheels with Polyurethane Tyre

DESCRIPTION:  
Light plastic wheel for wheelchairs.



Article code [mm] kg Price/€

**rim hollow PA6 GF15%**

PUW01208-38-H	310 x 42	12 <sup>1/2</sup> x 2 <sup>1/4</sup>	42	38	12	RC	Grey	1 250 g	50 kg	
PUW01208B-38-H	310 x 42	12 <sup>1/2</sup> x 2 <sup>1/4</sup>	42	38	12	RC	Black	1 250 g	50 kg	

Article code [mm] kg Price/€

**rim hollow PA6 GF15%**

PUW02007-38-H	310 x 42	12 <sup>1/2</sup> x 2 <sup>1/4</sup>	42	38	12	EWC	Grey	1 660 g	50 kg	
PUW02007B-38-H	310 x 42	12 <sup>1/2</sup> x 2 <sup>1/4</sup>	42	38	12	EWC	Black	1 660 g	50 kg	

Article code [mm] kg Price/€

**rim standard PA6 GF15%**

PUW02006-52	310 x 42	12 <sup>1/2</sup> x 2 <sup>1/4</sup>	42	52	12	RC	Grey	1 100 g	50 kg	
PUW02006B-52	310 x 42	12 <sup>1/2</sup> x 2 <sup>1/4</sup>	42	52	12	RC	Black	1 100 g	50 kg	

Article code [mm] kg Price/€

**rim standard PA6 GF15%**

PUW01616-52	300 x 48	12 <sup>1/2</sup> x 2 <sup>1/4</sup>	48	52	12	SWIFT	Grey	1 200 g	50 kg	
PUW01616B-52	300 x 48	12 <sup>1/2</sup> x 2 <sup>1/4</sup>	48	52	12	SWIFT	Black	1 200 g	50 kg	

12"

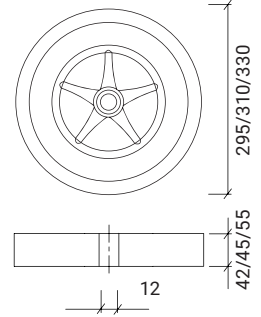
**KRYPTON**

# Wheels with Polyurethane Tyre



## 12" Wheels with Polyurethane Tyre

DESCRIPTION:  
Light plastic wheel for wheelchairs.



Article code [mm] kg Price/€

**rim standard PA6 GF15%**



Article code	[mm]								kg	Price/€
PUW30011-52	330 x 55	12 <sup>1/2</sup> x 2 <sup>1/4</sup>	55	52	12	M28	Grey	1 565 g	50 kg	
PUW3001B-52	330 x 55	12 <sup>1/2</sup> x 2 <sup>1/4</sup>	55	52	12	M28	Black	1 565 g	50 kg	

Article code [mm] kg Price/€

**rim PPCP**



Article code	[mm]								kg	Price/€
PUW3006-48	310 x 42	12 <sup>1/2</sup> x 2 <sup>1/4</sup>	42	48	12	RC	Grey	1 020 g	45 kg	
PUW3006B-48	310 x 42	12 <sup>1/2</sup> x 2 <sup>1/4</sup>	42	48	12	RC	Black	1 020 g	45 kg	

Article code [mm] kg Price/€

**rim PPCP**



Article code	[mm]								kg	Price/€
PUW3007-48	295 x 45	12 <sup>1/2</sup> x 2 <sup>1/4</sup>	45	48	12	FLAT	Grey	885 g	45 kg	
PUW3007B-48	295 x 45	12 <sup>1/2</sup> x 2 <sup>1/4</sup>	45	48	12	FLAT	Black	885 g	45 kg	

**PA6 GF15%** is a 15% glass fibre reinforced, heat stabilised polyamide 6 with medium stiffness and strength.

**PPCP** or polypropylene copolymer is a thermoplastic polymer material. This form is a bit softer but has a high impact strength.

Krypton Industries Limited  
24A, Camac street, Kolkata 700016, India

KRYPTON Europe s.r.o.

---

# Wheels with Rubber Tyre

---



5"

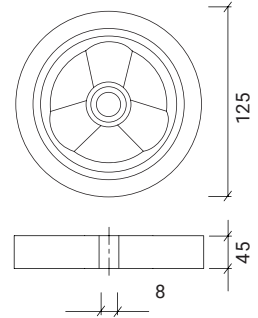
**////KRYPTON**

# Wheels with Solid Rubber Tyre



## 5" Wheels with Solid Rubber Tyre

DESCRIPTION:  
Plastic wheel with solid rubber tyre for wheelchairs.



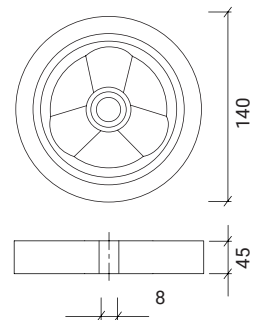
Article code	[mm]								kg ↓↓	Price/€
RUBW1001-45	125 × 40	125	40	45	8	Smooth	Grey	395 g	35 kg	
RUBW1001B-45	125 × 40	125	40	45	8	Smooth	Black	395 g	35 kg	

6"



## 6" Wheels with Solid Rubber Tyre

DESCRIPTION:  
Plastic wheel with solid rubber tyre for wheelchairs.



Article code	[mm]								kg ↓↓	Price/€
RUBW1002-45	140 × 40	140	40	45	8	Smooth	Grey	535 g	40 kg	
RUBW1002B-45	140 × 40	140	40	45	8	Smooth	Black	535 g	40 kg	

Krypton Industries Limited  
24A, Camac street, Kolkata 700016,  
India

## Profile Treads



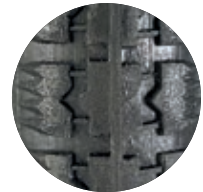
ECO LN



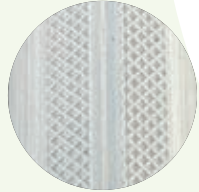
ECO LN (Black)



ECO RX



ECO RX (Black)



WC



WC (Black)



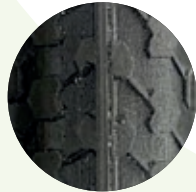
KB



KB (Black)



KL



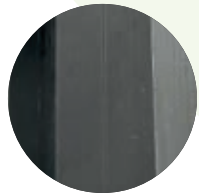
KL (Black)



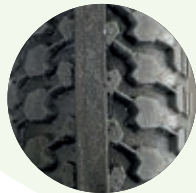
KLB (Dark Grey)



KLB (Yellow)



PYD (Black)



KDB



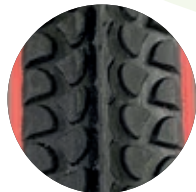
HD



INSERT



DK



DK (Red-Black)

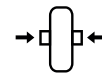
## Legend



Wheel diameter  
[mm]



Wheel width  
[mm]



Hub length  
[mm]



Axle diameter  
[mm]



Profile Treads



Colours



Weight [g]



Load capacity [kg]

# Rear Wheels Aluminium & Plastic

---



**KRYPTON**

24"

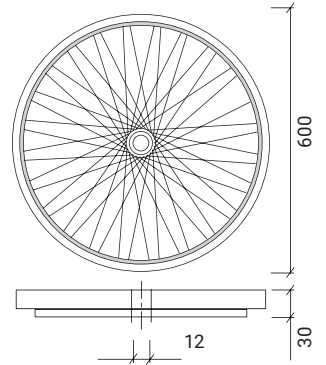
# Aluminium Spoke Wheels



## 24" Aluminium Spoke Wheels

### DESCRIPTION:

- Complete wheel for wheelchair
- aluminium rim - silver anodized
- aluminium pushrim - silver anodized - polyurethane tyre
- 36 steel spokes
- steel hub - black powder coating
- bearing 6001 2RS - 12 mm



Article code	[inch]								kg ↓↓	Price/€
PUW01102	24 × 1 3/8	600	30	53	12	ECO-LN	Grey	1 760 g	80 kg	
PUW01102B	24 × 1 3/8	600	30	53	12	ECO-LN	Black	1 760 g	80 kg	

Article code	[inch]								kg ↓↓	Price/€
PUW01101	24 × 1	600	25	53	12	WC	Grey	1 700 g	80 kg	
PUW01101B	24 × 1	600	25	53	12	WC	Black	1 700 g	80 kg	



Krypton Industries Limited  
24A, Camac street, Kolkata 700016,  
India



**////KRYPTON**

24"

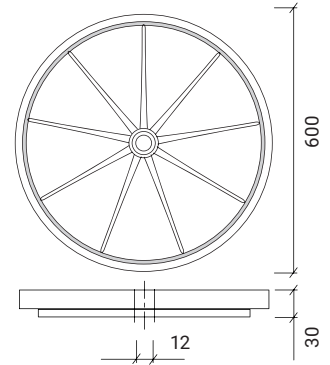
# Plastic Spoke Wheels



## 24" Plastic Spoke Wheels

**DESCRIPTION:**

- Complete plastic wheel for wheelchair
- plastic rim (9 spokes)
- aluminium pushrim - silver anodized - polyurethane tyre
- bearing 6201 2RS - 12 mm



Article code      [inch]                                         kg      Price/€

**With aluminium pushrim**

<b>PUW01001BB</b>	24 × 1 3/8	600	30	53	12	ECO-LN	Black	2 195 g	80 kg	
<b>PUW01001GG</b>	24 × 1 3/8	600	30	53	12	ECO-LN	Grey	2 195 g	80 kg	

**With plastic pushrim**

<b>PUW01002BB</b>	24 × 1 3/8	600	30	53	12	ECO-LN	Black	2 195 g	80 kg	
<b>PUW01002GG</b>	24 × 1 3/8	600	30	53	12	ECO-LN	Grey	2 195 g	80 kg	

**NO pushrim**

<b>PUW02101BB</b>	24 × 1 3/8	600	30	53	12	ECO-LN	Black	1 950 g	80 kg	
<b>PUW02101GG</b>	24 × 1 3/8	600	30	53	12	ECO-LN	Grey	1 950 g	80 kg	



Krypton Industries Limited  
24A, Camac street, Kolkata 700016,  
India



icare international private limited

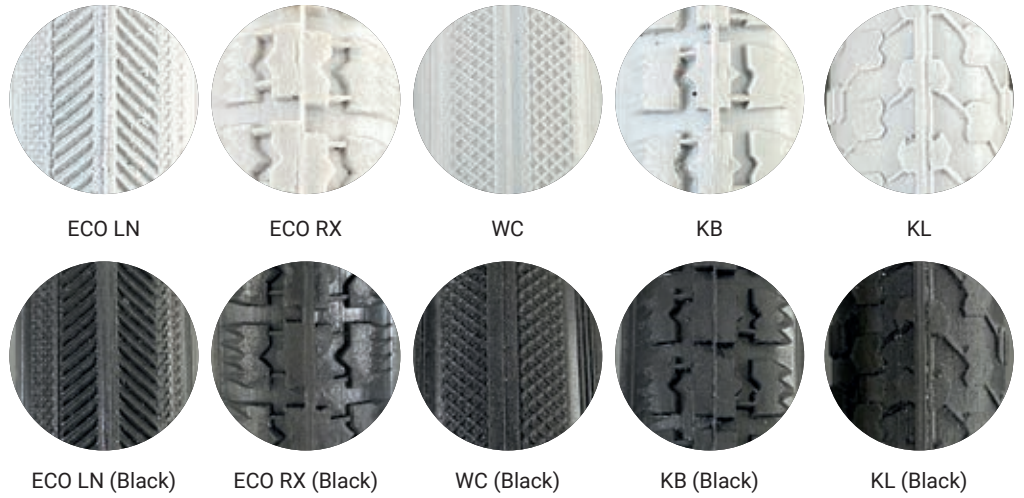
---

# POLYURETHANE TYRES

---



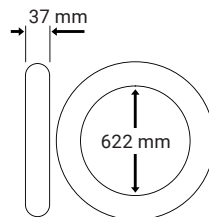
## Profile Treads



type	ECO LN	ECO RX	WC	KB	KL
26"			●		
24"	●	●	●	●	●
22"			●	●	
20"			●		
16"					
12"					

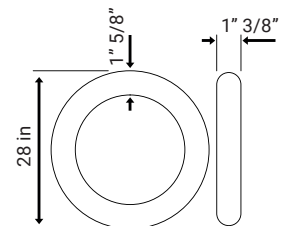
### Size Markings

Current dimensions markings on tires.



**ETRTO (ISO)**  
37 - 622

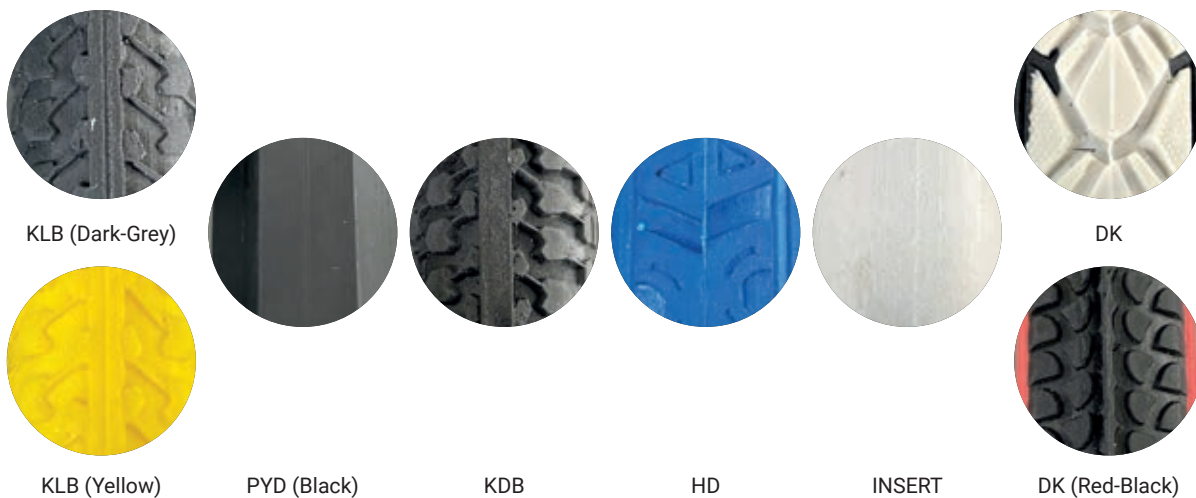
In mm approximate  
tire width - rim diameter



**Inch markings**  
28 × 1 5/8 × 1 3/8

In inch approximate  
tire outer diameter × tire height  
(optional) × tire width

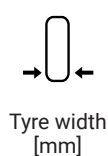
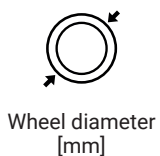
Krypton Industries Limited  
24A, Camac street, Kolkata 700016,  
India



type	KLB	PYD	KDB	HD	INSERT	DK
26"		●				
24"	●	●				
22"		●		●		
20"			●		●	●
16"			●			
12"						

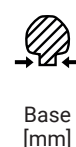
### Hardness

- 1 = 5-6 Bar
- 2 = 6-7 Bar
- 3 = 7-8 Bar
- 4 = 8-9 Bar



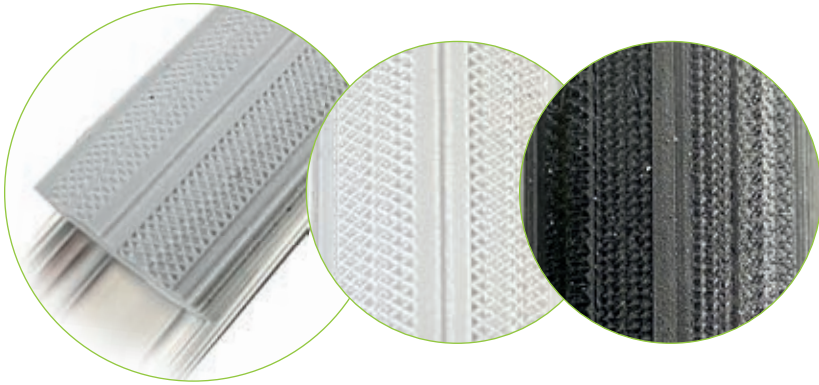
### Base

- A = 16 - 18 mm
- B = 18 - 20 mm
- C = 19 - 21 mm
- D = 21 - 22 mm



ETRTO  
ISO 5775

# WC



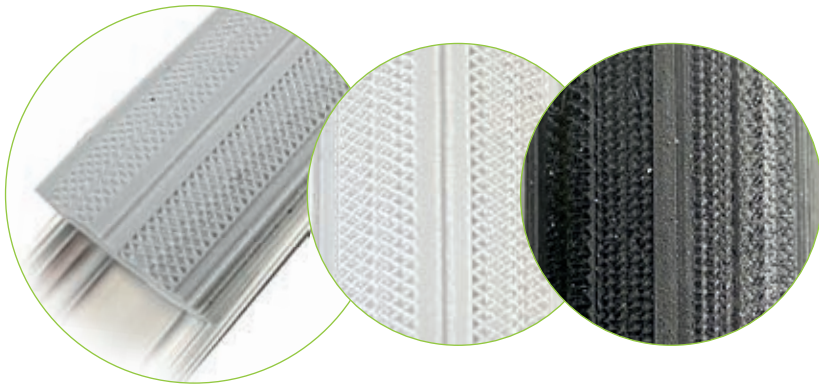
26 × 1"

Article code	[inch]							ETRTO		
PUT00046B-3C	26" × 1"									

25 × 1"

Article code	[inch]							ETRTO		
PUT00039B-4C	25" × 1"									

# WC



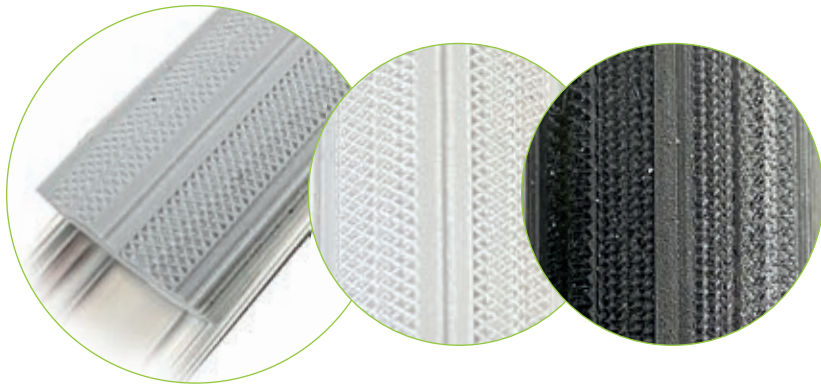
## 24 × 1 3/8"

Article code	[inch]							ETRTO		
PUT00004-1C	24" × 1 3/8"	24	32	19-21	540	WC	37-540	Grey	5-6 Bar	
PUT00004B-1C	24" × 1 3/8"	24	23	19-21	540	WC	37-540	Black	5-6 Bar	
PUT00004-2C	24" × 1 3/8"	24	32	19-21	540	WC	37-540	Grey	6-7 Bar	
PUT00004B-2C	24" × 1 3/8"	24	23	19-21	540	WC	37-540	Black	6-7 Bar	
PUT00004-3C	24" × 1 3/8"	24	32	19-21	540	WC	37-540	Grey	7-8 Bar	
PUT00004B-3C	24" × 1 3/8"	24	23	19-21	540	WC	37-540	Black	7-8 Bar	
PUT00004-4C	24" × 1 3/8"	24	32	19-21	540	WC	37-540	Grey	8-9 Bar	
PUT00004B-4C	24" × 1 3/8"	24	23	19-21	540	WC	37-540	Black	8-9 Bar	

## 24 × 1"

Article code	[inch]							ETRTO		
PUT00006-1C	24" × 1"	20	25	19-21	540	WC	25-540	Grey	5-6 Bar	
PUT00006DG-1C	24" × 1"	20	25	19-21	540	WC	37-540	Dark Grey	5-6 Bar	
PUT00006-2C	24" × 1"	20	25	19-21	540	WC	37-540	Grey	6-7 Bar	
PUT00006-3C	24" × 1"	20	25	19-21	540	WC	37-540	Grey	7-8 Bar	
PUT00006-4C	24" × 1"	20	25	19-21	540	WC	37-540	Grey	8-9 Bar	
PUT00006B-4C	24" × 1"	20	25	19-21	540	WC	37-540	Black	8-9 Bar	
PUT00006-2D	24" × 1"	20	25	19-21	540	WC	37-540	Grey	6-7 Bar	
PUT00006B-2D	24" × 1"	20	25	19-21	540	WC	37-540	Blac	6-7 Bar	

# WC



## 22 × 1 3/8"

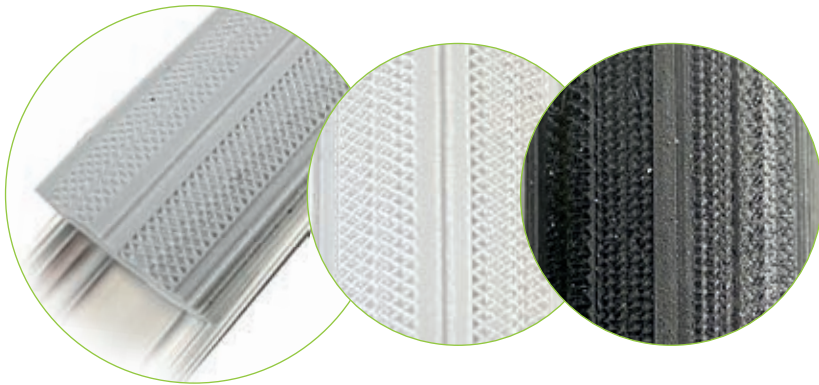
Article code	[inch]							ETRTO		
PUT00003-1C	22" × 1 3/8"	24	32	19-21	489	WC	37-489	Grey	5-6 Bar	
PUT00003B-1C	22" × 1 3/8"	24	32	19-21	489	WC	37-489	Black	5-6 Bar	
PUT00003-2C	22" × 1 3/8"	24	32	19-21	489	WC	37-540	Grey	6-7 Bar	
PUT00003B-2C	22" × 1 3/8"	24	32	19-21	489	WC	37-540	Black	6-7 Bar	
PUT00003-3C	22" × 1 3/8"	24	32	19-21	489	WC	37-540	Grey	7-8 Bar	
PUT00003B-3C	22" × 1 3/8"	24	32	19-21	489	WC	37-540	Black	7-8 Bar	
PUT00003-4C	22" × 1 3/8"	24	32	19-21	489	WC	37-540	Grey	8-9 Bar	
PUT00003B-4C	24" × 1 3/8"	24	32	19-21	489	WC	37-540	Black	8-9 Bar	

## 22 × 1"



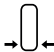





Article code	[inch]							ETRTO		
PUT00042-4A	22" × 1"	19	23	16-18	451	WC	25-501	Grey	8-9 Bar	
PUT00003B-1C	22" × 1"	19	23	16-18	451	WC	25-501	Black	8-9 Bar	
PUT00008-1C	22" × 1"	20	25	19-21	489	WC	25-489	Grey	5-6 Bar	
PUT00008B-1C	22" × 1"	20	25	19-21	489	WC	25-489	Black	5-6 Bar	
PUT00008-4C	22" × 1"	20	25	19-21	489	WC	25-489	Grey	8-9 Bar	
PUT00008B-4C	22" × 1"	20	25	19-21	489	WC	25-489	Black	8-9 Bar	





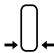





# WC



## 20 × 1 3/8"

Article code	[inch]							ETRTO		
PUT00002-1C	20" × 1 3/8"	24	31	19-21	451	WC	37-451	Grey	5-6 Bar	
PUT00002B-1C	20" × 1 3/8"	24	31	19-21	451	WC	37-451	Black	5-6 Bar	
PUT00002-2C	20" × 1 3/8"	24	31	19-21	451	WC	37-451	Grey	6-7 Bar	
PUT00002B-2C	20" × 1 3/8"	24	31	19-21	451	WC	37-451	Black	6-7 Bar	
PUT00002-3C	20" × 1 3/8"	24	31	19-21	451	WC	37-451	Grey	7-8 Bar	
PUT00002B-3C	20" × 1 3/8"	24	31	19-21	451	WC	37-451	Black	7-8 Bar	
PUT00002-4C	20" × 1 3/8"	24	31	19-21	451	WC	37-451	Grey	8-9 Bar	
PUT00002B-4C	20" × 1 3/8"	24	31	19-21	451	WC	37-451	Black	8-9 Bar	

## 20 × 1"

Article code	[inch]							ETRTO		
PUT00040B-4A	20" × 1"	19	23	16-18	451	WC	25-451	Black	8-9 Bar	
PUT00040-4A	20" × 1"	19	23	16-18	451	WC	25-451	Grey	8-9 Bar	

# KLB



24 × 1 3/8"

Article code	[inch]							ETRTO		
PUT00005-2A	24" × 1 3/8"	24	31	18-20	540	<b>KLB</b>	37-540	Grey	6-7 Bar	
PUT00005-2C	24" × 1 3/8"	24	31	19-21	540	<b>KLB</b>	37-540	Grey	5-6 Bar	
PUT00005-1C	24" × 1 3/8"	24	31	19-21	540	<b>KLB</b>	37-540	Grey	5-6 Bar	
PUT00005DG-1C	24" × 1 3/8"	24	31	19-21	540	<b>KLB</b>	37-540	Dark Grey	6-7 Bar	
PUT00005DG-2C	24" × 1 3/8"	24	31	19-21	540	<b>KLB</b>	37-540	Dark Grey	6-7 Bar	
PUT00005-3C	24" × 1 3/8"	24	31	19-21	540	<b>KLB</b>	37-540	Grey	7-8 Bar	
PUT00005DG-1D	24" × 1 3/8"	24	31	21-22	540	<b>KLB</b>	37-540	Dark Grey	5-6 Bar	
PUT00005DG-2D	24" × 1 3/8"	24	31	21-22	540	<b>KLB</b>	37-540	Dark Grey	6-7 Bar	

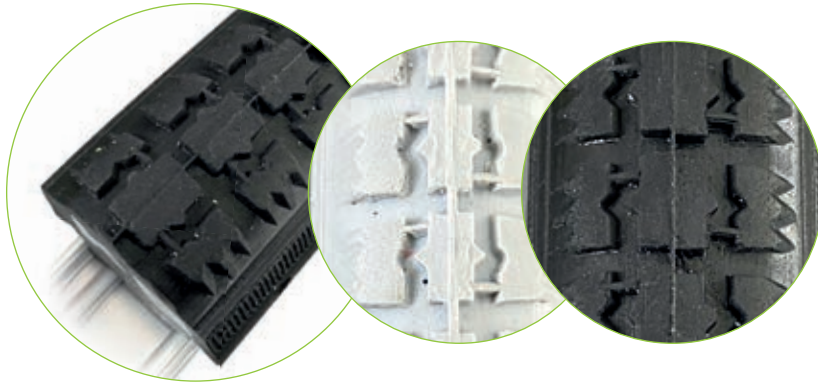
KL



24 × 1

Article code	[inch]							ETRTO		
PUT00007DG-2A	24" × 1"		21	25	16-18	540	KL	25-540	Dark Grey	6-7 Bar
PUT00010-2B	24" × 1"		21	25	18-20	540	KL	37-540	Grey	6-7 Bar
PUT00007-2C	24" × 1"		21	25	19-21	540	KL	37-540	Grey	6-7 Bar
PUT00007DG-2C	24" × 1"		21	25	19-21	540	KL	37-540	Dark Grey	6-7 Bar
PUT00007B-2C	24" × 1"		21	25	19-21	540	KL	37-540	Black	6-7 Bar
PUT00007DG-3C	24" × 1"		21	25	19-21	540	KL	37-540	Dark Grey	7-8 Bar
PUT00007-2D	24" × 1"		21	25	21-22	540	KL	37-540	Grey	6-7 Bar

# KB



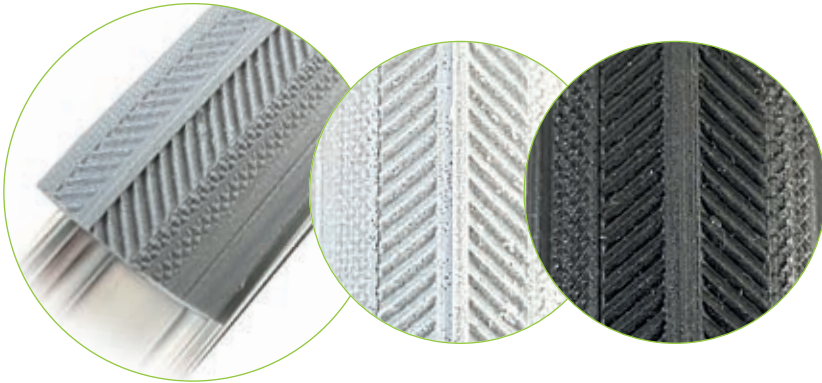
24 × 1 3/8"

Article code	[inch]							ETRT0		
PUT00034-2C	24" × 1 3/8"	26	32	19-21	540	KB	37-540	Grey	6-7 Bar	
PUT00034B-2C	24" × 1 3/8"	26	32	19-21	540	KB	37-540	Black	6-7 Bar	
PUT00034B-4C	24" × 1 3/8"	26	32	19-21	540	KB	37-540	Black	8-9 Bar	

22 × 1 3/8"

Article code	[inch]							ETRT0		
PUT00033-1C	22" × 1 3/8"	26	33	19-21	489	KB	37-489	Grey	5-6 Bar	
PUT00033B-2C	22" × 1 3/8"	26	33	19-21	489	KB	37-489	Black	6-7 Bar	
PUT00033-2C	22" × 1 3/8"	26	33	19-21	489	KB	37-489	Grey	6-7 Bar	
PUT00035-2C	22" × 1 3/8"	26	33	19-21	501	KB	37-501	Grey	6-7 Bar	

# ECO-LN



24 × 1 3/8"

Article code	[inch]							ETRT0		
PUT00106-2C	24" × 1 3/8"	610	30	23	19-21	540	ECO-LN	37-540	Grey	6-7 Bar
PUT00106B-2C	24" × 1 3/8"	610	30	23	19-21	540	ECO-LN	37-540	Black	6-7 Bar

# ECO-RX



24 × 1 3/8"

Article code	[inch]							ETRT0		
PUT00104-2C	24" × 1 3/8"	610	29	23	19-21	540	ECO-RX	37-540	Grey	6-7 Bar
PUT00104B-2C	24" × 1 3/8"	610	29	23	19-21	540	ECO-RX	37-540	Black	6-7 Bar

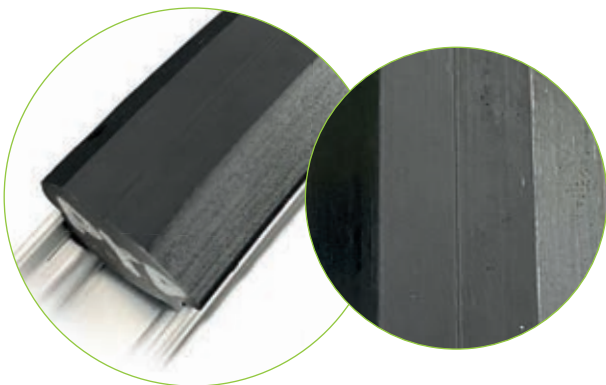
# KDB



20 × 1,75"  
16 × 1,75"

Article code	[inch]							ETRTO		
PUT01002-2	20" × 1,75"	610	30	23	23-26	540	KDB	37-540	Black	6-7 Bar
PUT55006	16" × 1,75"			27	19-21	3	KDB	47-305	Grey	6-7 Bar

# PYD

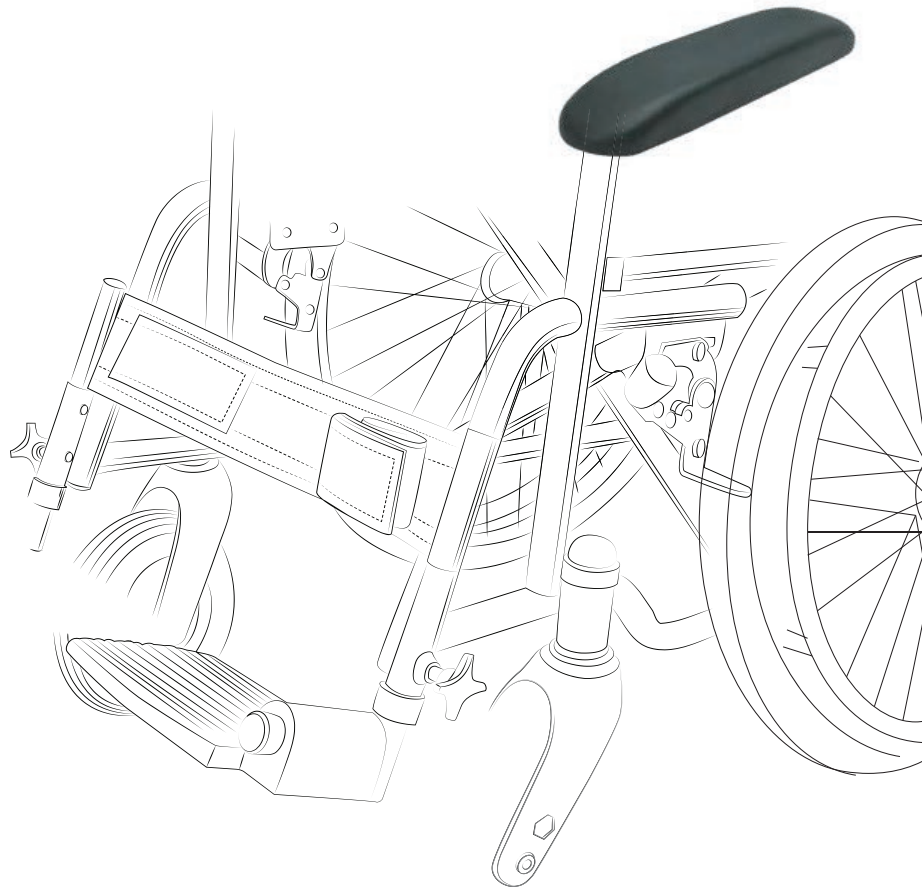


22 × 1"  
24 × 1"

Article code	[inch]							ETRTO		
PUT00024	22" × 1"	517	14	27	19	489	PYD	25-489	Black	8-9 Bar
PUT00023	24" × 1"	568	14	28	18	540	PYD	25-540	Black	8-9 Bar

# Polyurethane Parts

---



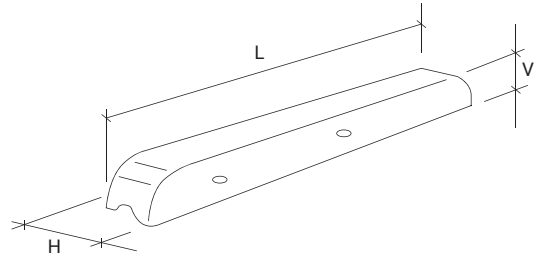
**KRYPTON**

# Arm Rest PU

## 315 × 42 × 30 mm (Polyurethane)



DESCRIPTION:  
Arm Rest (Big)

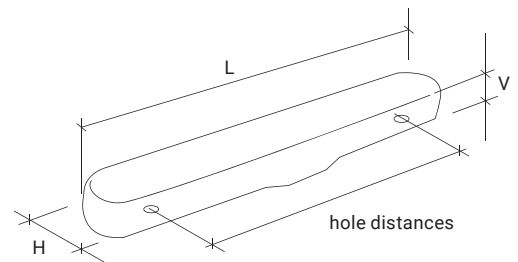


Article code	L [mm]	H [mm]	V [mm]		Price/€
ARP3154230	315	42	30	Black	

## 330 × 50 × 25 mm (Polyurethane)



DESCRIPTION:  
Arm Rest (Big II)  
• hole distance 260 mm

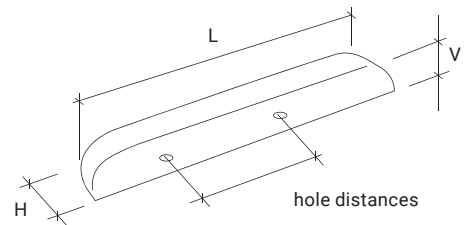


Article code	L [mm]	H [mm]	V [mm]		Price/€
ARP3305025	330	50	25	Black	

## 240 × 42 × 30 mm (Polyurethane)



DESCRIPTION:  
Arm Rest (Small)  
• hole distance 105 mm



Article code	L [mm]	H [mm]	V [mm]		Price/€
ARP2404230	240	42	30	Black	



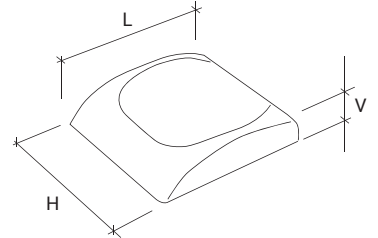
**////KRYPTON**

# Arm Rest PU

## 165 × 110 × 40 mm (Polyurethane)



DESCRIPTION:  
Arm Rest

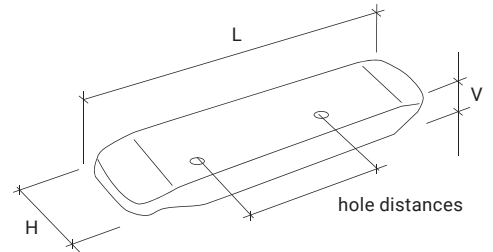


Article code	L [mm]	H [mm]	V [mm]		Price/€
ARP16511040	165	110	40	Black	

## 380 × 58 × 32 mm (Polyurethane)



DESCRIPTION:  
Arm Rest  
• hole distance 175 mm

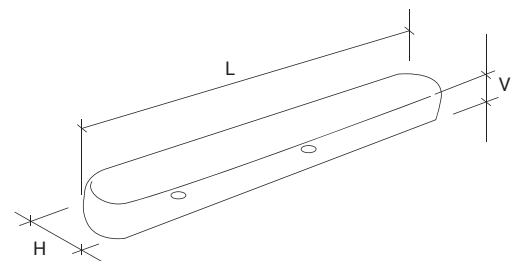


Article code	L [mm]	H [mm]	V [mm]		Price/€
ARP1426723	380	58	32	Black	

## 280 × 59 × 28 mm (Polyurethane)



DESCRIPTION:  
Arm Rest



Article code	L [mm]	H [mm]	V [mm]		Price/€
ARP7001	280	59	28	Black	

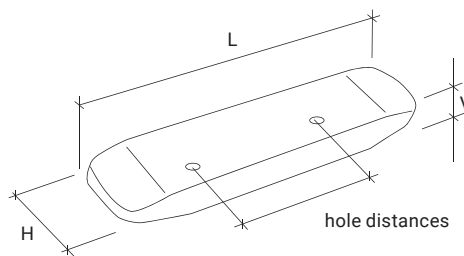
**KRYPTON**





# Arm Rest PU

## 280 × 58 × 32 mm (Polyurethane)



DESCRIPTION:  
Arm Rest  
• hole distance 175 mm

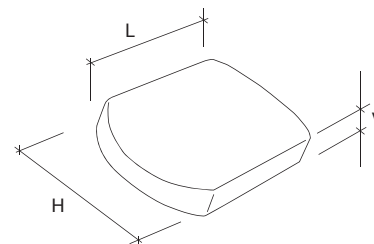




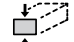

Article code	 L [mm]	 H [mm]	 V [mm]		Price/€
1434676	280	58	32	Black	

## 235 × 145 × 35 mm (Polyurethane)



DESCRIPTION:  
Arm Rest

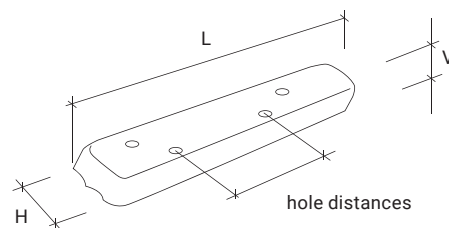






Article code	 L [mm]	 H [mm]	 V [mm]		Price/€
ARP23514535	235	145	35	Black	

## 370 × 50 × 30 mm (Polyurethane)



DESCRIPTION:  
Arm Rest  
• hole distance 240 mm  
• hole distance 228 mm



Article code	 L [mm]	 H [mm]	 V [mm]		Price/€
P3705030	370	50	30	Black	

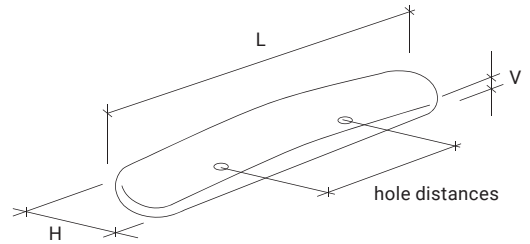
**////KRYPTON**



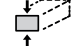

# Arm Rest PU

## 330 × 60 × 24 mm (Polyurethane)



DESCRIPTION:  
Arm Rest  
• hole distance 178 mm

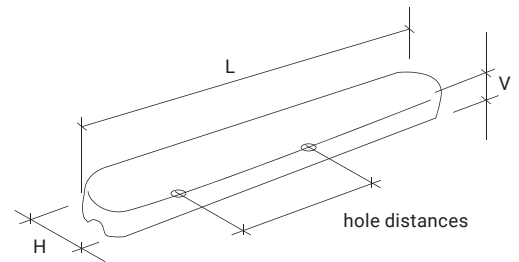




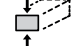

Article code	 L [mm]	 H [mm]	 V [mm]		Price/€
ARP3306024	330	60	24	Black	

## 365 × 48 × 25 mm (Polyurethane)



DESCRIPTION:  
Arm Rest  
• hole distance 265 mm

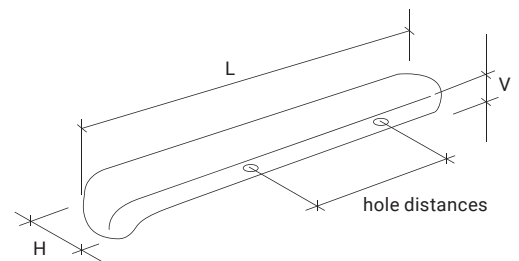




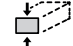

Article code	 L [mm]	 H [mm]	 V [mm]		Price/€
ARP3654825	365	48	25	Black	

## 345 × 52 × 20 mm (Polyurethane)



DESCRIPTION:  
Arm Rest  
• hole distance 137,5 mm



Article code	 L [mm]	 H [mm]	 V [mm]		Price/€
ARP3455220	345	52	20	Black	

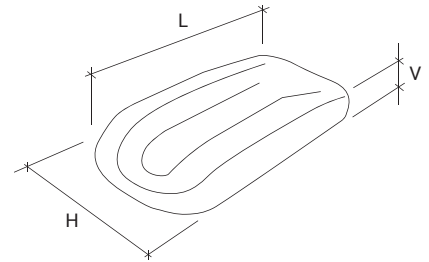
**////KRYPTON**





# Arm Rest PU

## 350 × 122 × 35 mm (Polyurethane)



DESCRIPTION:  
Arm Rest

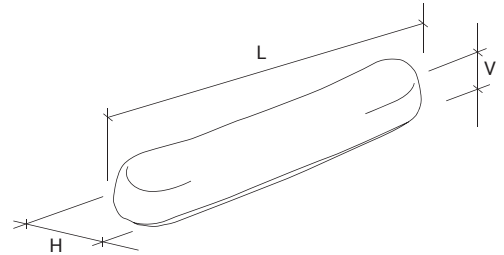






Article code	 L [mm]	 H [mm]	 V [mm]		Price/€
ARP35012235	350	122	35	Black	

## 210 × 36 × 36 mm (Polyurethane)



DESCRIPTION:  
Arm Rest

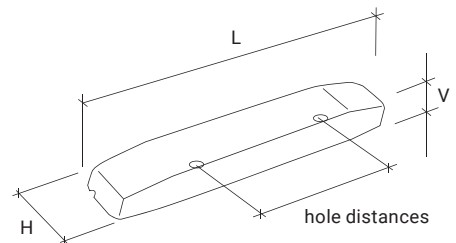






Article code	 L [mm]	 H [mm]	 V [mm]		Price/€
ARP2103636	210	36	36	Black	

## 300 × 50 × 35 mm (Polyurethane)



DESCRIPTION:  
Arm Rest  
• hole distance 200 mm



Article code	 L [mm]	 H [mm]	 V [mm]		Price/€
ARP3005035	300	50	35	Black	

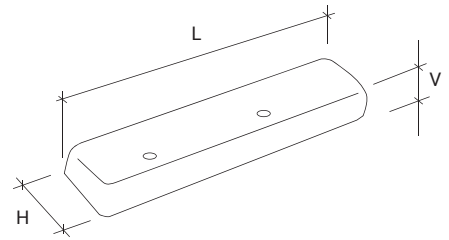
**KRYPTON**



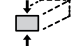

# Arm Rest PU

## 280 × 60 × 30 mm (Polyurethane)



DESCRIPTION:  
Arm Rest

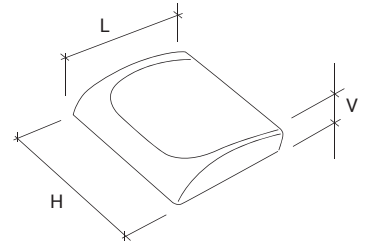




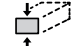

Article code	 L [mm]	 H [mm]	 V [mm]		Price/€
<b>P2806030B</b>	280	60	30	Black	

## 165 × 145 × 40 mm (Polyurethane)



DESCRIPTION:  
Arm Rest

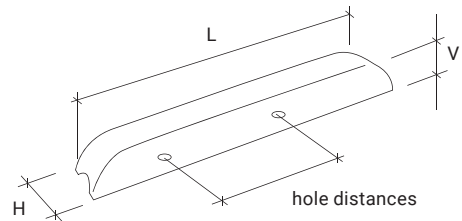






Article code	 L [mm]	 H [mm]	 V [mm]		Price/€
<b>ARP16514040B</b>	165	145	40	Black	

## 240 × 42 × 30 mm (Polyurethane)



DESCRIPTION:  
Arm Rest  
• hole distance 105 mm



Article code	 L [mm]	 H [mm]	 V [mm]		Price/€
<b>ARP2404230</b>	240	42	30	Black	

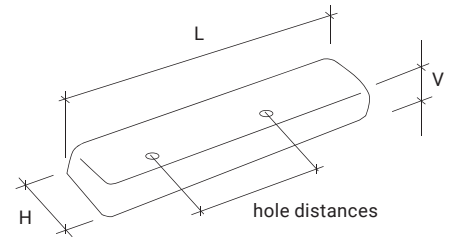
**////KRYPTON**

# Arm Rest PU

## 156 × 42 × 20 mm (Polyurethane)



DESCRIPTION:  
Arm Rest  
• hole distance 106 mm

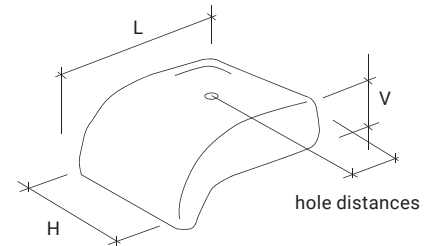


Article code	L [mm]	H [mm]	V [mm]		Price/€
ARP1564220	156	42	20	Black	

## 72 × 84 × 20 mm (Polyurethane)



DESCRIPTION:  
Knee Pad  
• hole distance 35 mm

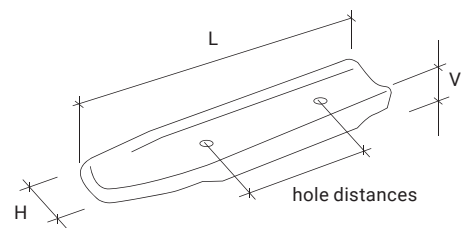


Article code	L [mm]	H [mm]	V [mm]		Price/€
ARP728420	72	84	20	Black	

## 391 × 80 × 49 mm (Polyurethane)



DESCRIPTION:  
Arm Rest (EZI)  
• hole distance 178 mm



Article code	L [mm]	H [mm]	V [mm]		Price/€
ARP3918049	391	80	49	Black	

**KRYPTON**

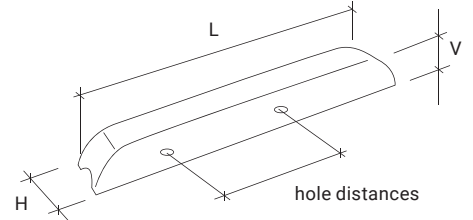
# Arm Rest PU



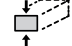

## 220 × 42 × 30 mm (Polyurethane)



**DESCRIPTION:**

- Arm Rest  
• hole distance 150 mm



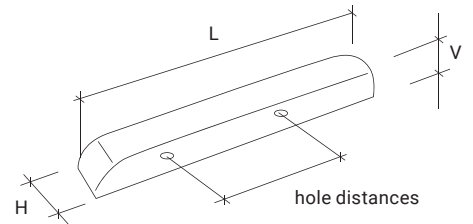
Article code	 L [mm]	 H [mm]	 V [mm]		Price/€
ARP2204230	220	42	30	Black	



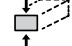

## 200 × 42 × 20 mm (Polyurethane)



**DESCRIPTION:**

- Arm Rest  
• hole distance 140 mm



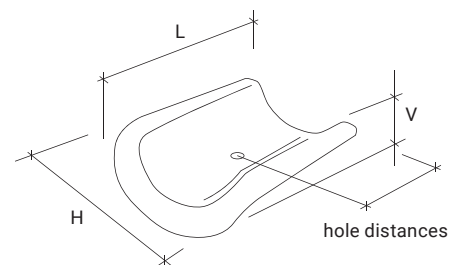
Article code	 L [mm]	 H [mm]	 V [mm]		Price/€
ARP2004220	200	42	20	Black	





## 290 × 180 × 32 mm (Polyurethane)



**DESCRIPTION:**

- Calf Pad  
• hole distance 150 mm



Article code	 L [mm]	 H [mm]	 V [mm]		Price/€
ARP29018032	290	180	32	Black	

**KRYPTON**

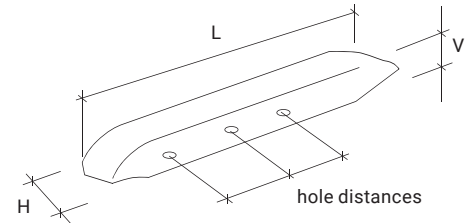
# Arm Rest PU

## 280 × 58 × 32 R+L (3+3) mm (Polyurethane)



**DESCRIPTION:**

- with riveting nut M5 (3 + 3)  
– on the both sides
- for ROUND tube
- short
- hole distance 0 mm + 61 mm + 150 mm



Article code



L [mm]



H [mm]



V [mm]



Price/€

ARP26721-RT-6

280

58

32

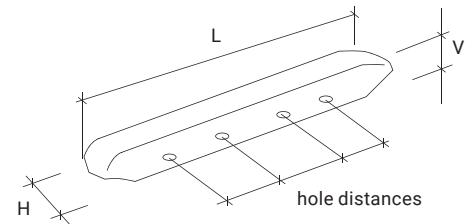
Black

## 380 × 58 × 32 R+L (4+4) mm (Polyurethane)



**DESCRIPTION:**

- with riveting nut M5 (4 + 4)  
– on both sides
- for ROUND tube
- short
- hole distance 0 mm + 90 mm + 150 mm  
+ 260 mm



Article code



L [mm]



H [mm]



V [mm]



Price/€

ARP26723-RT-8

380

58

32

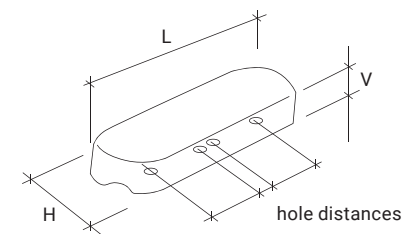
Black

## 175 × 50 × 26 mm (Polyurethane)



**DESCRIPTION:**

- hole distance 82 mm
- hole distance 17 mm
- M5



Article code



L [mm]



H [mm]



V [mm]



Price/€

ARP1755026

175

50

26

Black



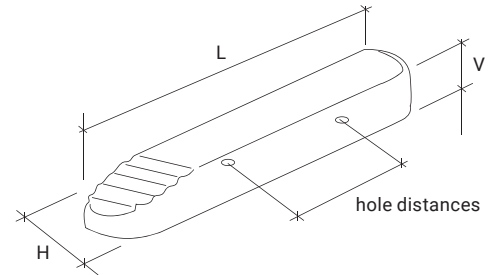
**KRYPTON**



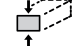

# Arm Rest PU

## 303 × 59 × 37 (Polyurethane)



DESCRIPTION:  
Arm Rest  
• hole distance 168 mm

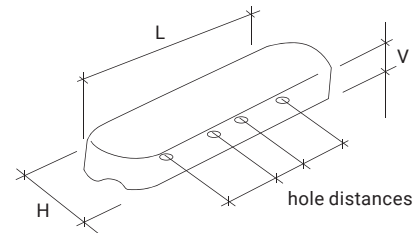




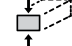

Article code	 L [mm]	 H [mm]	 V [mm]		Price/€
ARP3035937	303	59	37	Black	

## 265 × 55 × 26 (Polyurethane)



DESCRIPTION:  
• hole distance 128 mm  
• hole distance 82 mm  
• M5

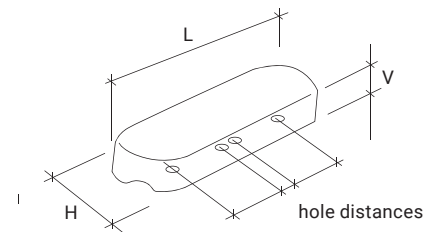




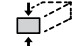

Article code	 L [mm]	 H [mm]	 V [mm]		Price/€
ARP2655026	265	55	26	Black	

## 235 × 50 × 26 mm (Polyurethane)



DESCRIPTION:  
• hole distance 124,75 mm  
• hole distance 82 mm  
• M5



Article code	 L [mm]	 H [mm]	 V [mm]		Price/€
ARP2355026	235	50	26	Black	

**////KRYPTON**

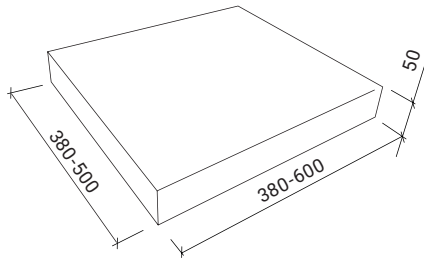
# Seat cushion (PU foam)



## Seat cushion (PU foam)

Removable polyester cover with zipper. Výměnný polyesterový potah se zipem.

- washable / omyvatelný
- disinfectable / dezinfikovatelný
- anti-slip protection / protiskluzová ochrana
- different sizes / různé rozměry



Article code mm mm mm

<b>WP383850</b>	380	380	50
<b>WP384050</b>	380	400	50
<b>WP384250</b>	380	420	50
<b>WP384350</b>	380	430	50
<b>WP404050</b>	400	400	50
<b>WP404250</b>	400	420	50
<b>WP434050</b>	430	400	50
<b>WP434250</b>	430	420	50
<b>WP434350</b>	430	430	50
<b>WP434550</b>	430	450	50
<b>WP435050</b>	430	500	50
<b>WP454050</b>	450	400	50
<b>WP454250</b>	450	420	50
<b>WP454550</b>	450	450	50
<b>WP454850</b>	450	480	50
<b>WP484250</b>	480	420	50
<b>WP484350</b>	480	430	50
<b>WP504350</b>	500	430	50
<b>WP514350</b>	510	435	50
<b>WP534350</b>	530	430	50
<b>WP554350</b>	550	430	50
<b>WP604350</b>	600	435	50



Krypton Industries Limited  
24A, Camac street, Kolkata 700016,  
India

**//// KRYPTON**

# ICE PEAK

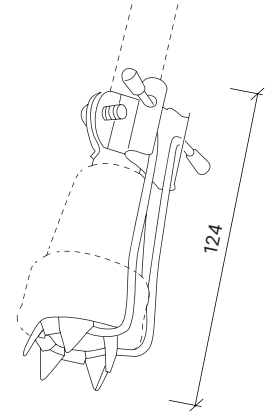


## ICE PEAK – násadec na hůl (protiskluzový)

### DESCRIPTION/POPIS:

For maximum confidence and safety when walking on snow and ice. / Pro maximální jistotu a bezpečnost při chůzi na sněhu a ledu.

- metal folding structure / kovová odklopná konstrukce
- universal use / univerzální použití
- non-slip spikes / protiskluzové hroty



Article code

[mm]

kg  
↓↑

Price/€

ICE PEAK 1 Peak



124 × 37 × 63 mm

16 ÷ 19,5 mm

30 ÷ 45 mm

stainless  
steel

75 g

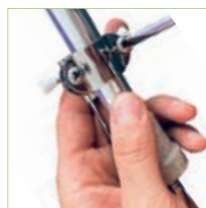
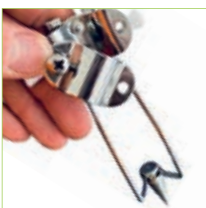
max.  
100 kg

ICE PEAK Crown



124 × 37 × 63 mm

SS 304



Krypton Industries  
Limited  
24A, Camac street,  
Kolkata 700016, India

# Spare Parts Rehab



**////// KRYPTON**  
*Your Components*

**KRYPTON Industries Limited**

**24A, Camac street, Kolkata 700016,  
India Request your quote:  
[www.icareworld.in](http://www.icareworld.in)**